

Northern Illinois Market Facts

2 0 0 8

The screenshot shows the Lee County, Illinois website homepage in a browser window. The browser title is "Lee County, Illinois" and the address bar shows "http://www.countyoflee.org/". The website has a dark red header with the "LEE COUNTY" logo and navigation links: HOME, COUNTY OFFICES, COUNTY BOARD, CONTACT US, and LINKS. A left sidebar contains links for DIRECTIONS, MAPS, and WEATHER. The main content area features a welcome message, a "Thank you for visiting Lee County!" note, and a "News and Highlighted Features" section with several bullet points. A "Quick Links" section is also present. The footer includes a navigation bar and the text "last updated: 04/22/2008".

Lee County, Illinois

http://www.countyoflee.org/

LEE COUNTY

HOME COUNTY OFFICES COUNTY BOARD CONTACT US LINKS

DIRECTIONS
MAPS
WEATHER

Welcome to the Lee County, Illinois website. Click on any of the links above or to the left to see what offices and services the Lee County government has to offer.

Thank you for visiting Lee County!

News and Highlighted Features

- Lee County November 30 2008 BUDGET (2MB)
- Lee County 2007 Assessment Publication
- The Lee County GIS Interactive Parcel Map is now available.
- Pay your Lee County Property Tax On-Line.
- The Lee County Code is now viewable on line. Follow this [link](#) to open a new browser window containing a viewable and searchable copy of the official Lee County Code.
- [Lee County Election Results](#). (Link takes you off-site)
- [Planning Agenda for May 5, 2008](#)
- NO ZONING BOARD OF APPEALS MEETING FOR THE MONTH OF MAY**

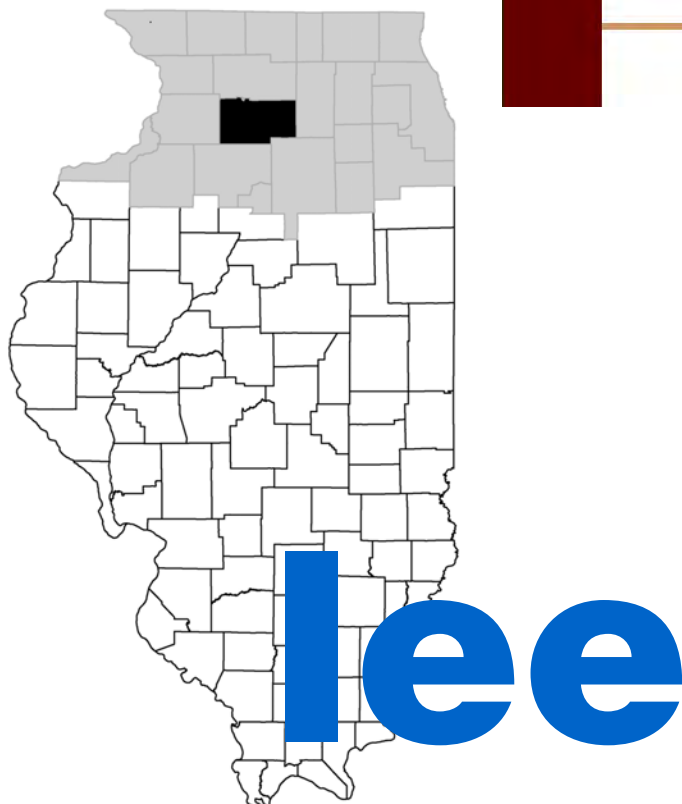
Lee County Special Voting Information: [Grace](#)
[Period Voting Information](#) [Early](#)
[Voting Information](#)

Quick Links

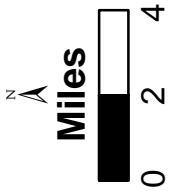
- [Information on Court Fee related Financial Assistance](#)
- [Lee County Code](#)
- [Lee County Building Permit](#)
- [Lee County Comprehensive Plan](#)
- [County Board Meeting Agendas & Minutes](#)
- [Pay a Traffic Ticket On-Line](#)
- [Voter Registration & Election Information](#)

HOME | COUNTY OFFICES | COUNTY BOARD | CONTACT US | LINKS
Questions, Comments, Problems? Contact the [webmaster](#)

last updated: 04/22/2008



Lee County Places, Townships, and Airport



Note: Figures in each place are 2006 Census population estimates. Data for split places are no longer reported by each county's portion. Map prepared by the Center for Governmental Studies, NIU-Outreach.

LEE COUNTY

Population Density 2007
49.5 persons
per square mile

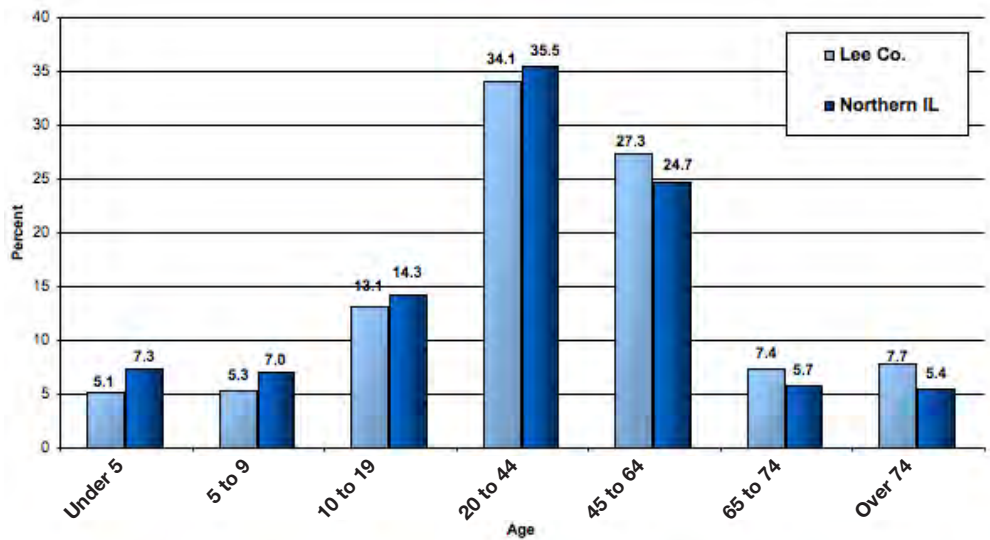
Median Age of
County Population
40.34

Figure 27A Population Trends and Projections

	Total 1990	Total 2000	Total 2007 (est.)	Total 2020 (proj.)
Lee Co. Population	34,392	36,062	35,898	37,609
Percent of Northern Illinois	0.4%	0.4%	0.4%	0.4%

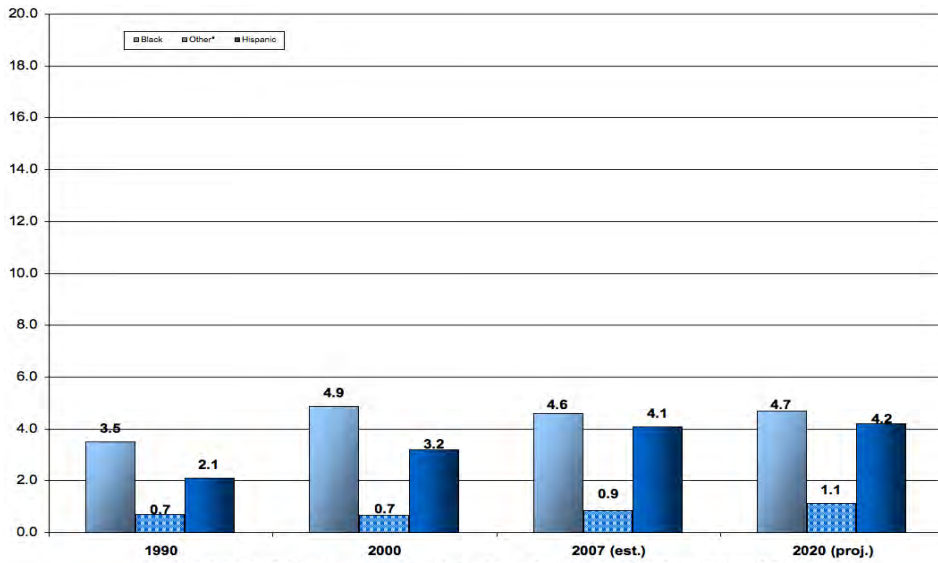
Sources: U.S. Census Bureau; Woods & Poole 2007
Note: 1990, and 2000 are actual census counts. Census 2007 estimate = 35,701.
2007 is a Woods & Poole estimate; 2020 is a Woods & Poole projection.

Figure 27B Age Distribution in 2007 by Percent of Population



Source: Woods & Poole, 2007
Note: Numbers may not add up to 100% due to computer rounding.

Figure 27C County Minority Population by Percent



Sources: 1990, 2000 Census; Woods & Poole, 2007
 *Other is Asian/Pacific Islander and American Indian.

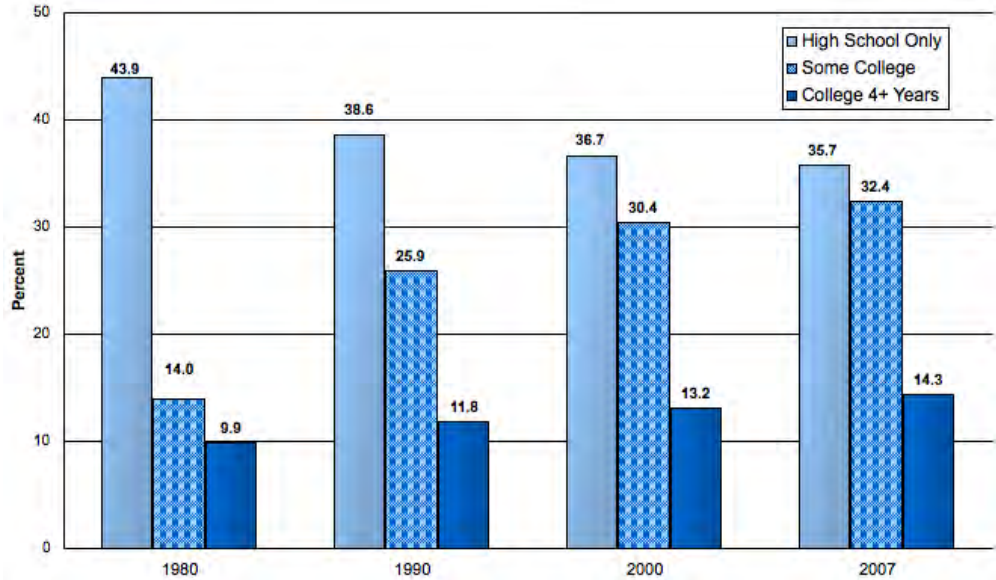
Figure 27D Household Trends and Projections

	1990	2000	2007 (est.)	2020 (proj.)
Number of Households	12,475	13,253	13,388	14,055
Percent of Northern Illinois	0.4%	0.4%	0.4%	0.3%
Lee Co.: Persons per Household	2.59	2.49	2.47	2.42
Northern Illinois: Persons per Household	2.67	2.62	2.57	2.50

Sources: 1990, 2000 Census; Woods & Poole, 2007

**LEE
COUNTY**

Figure 27E Highest Educational Attainment: Percent of Persons Age 25 and Over



Sources: U.S. Census Bureau; Easy Analytic Software, Inc., 2007
See Figure 3 in the Regional Section for comparisons.

Figure 27F General School Enrollment Information for Lee County

K-12 Districts	4
Elementary Districts	2
High School Districts	NA
Special Education and Other Cooperative Districts	NA
Public School Student Enrollment 2007-2008	4,955
Largest District Enrollment	2,939
Smallest District Enrollment	30
<hr/>	
Number of Non-Public Schools*	3
Non-Public School Enrollment 2006-2007	451
<hr/>	
Total 2006 Equalized Assessed Valuation Per Student	\$115,352
Estimated Average Property Tax Rate per \$100 in Assessment Year '06	\$9.38

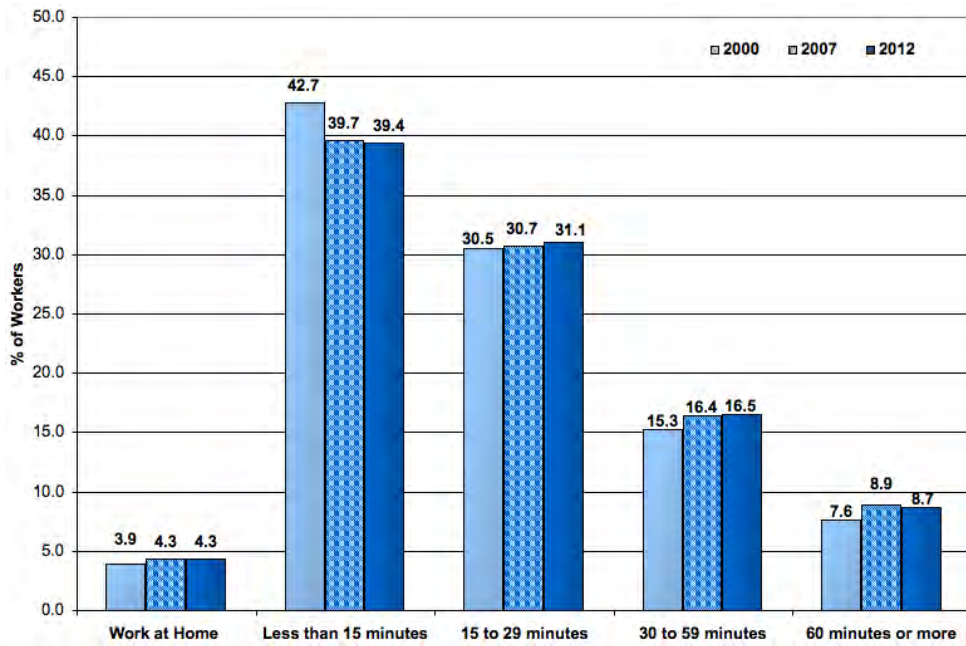
Sources: IL State Board of Education Fall Housing Reports 2007-08; 2006 PTAX-250; CGS
Note: Data reflect all types of districts and have differing grade levels included.
Special Education/Other Cooperatives are not included in the range of largest to smallest.
*These data reflect only those schools reporting data 2006-2007.

Figure 27G Labor Force Participation Characteristics

	1990	2000	2007
Total in Civilian Labor Force	16,296	17,240	16,973
% of persons 16 and over	61.6	60.7	60.6
% of persons 65 and over	15.0	14.2	9.5
% of women in labor force	54.3	56.7	57.3
% of labor force that is female	43.4	45.7	45.7
% self-employed	8.4	7.9	7.2
% white collar	43.9	50.4	48.4

Sources: U.S. Census Bureau, 2000; Easy Analytic Software, Inc., 2007; Longitudinal Employer - Household Dynamics, 2007
 Note: For residents 16 years old and over by place of residence.

Figure 27H Travel Time to Work, 2000, 2007, 2012



Source: Easy Analytic Software, Inc., 2007

LEE COUNTY

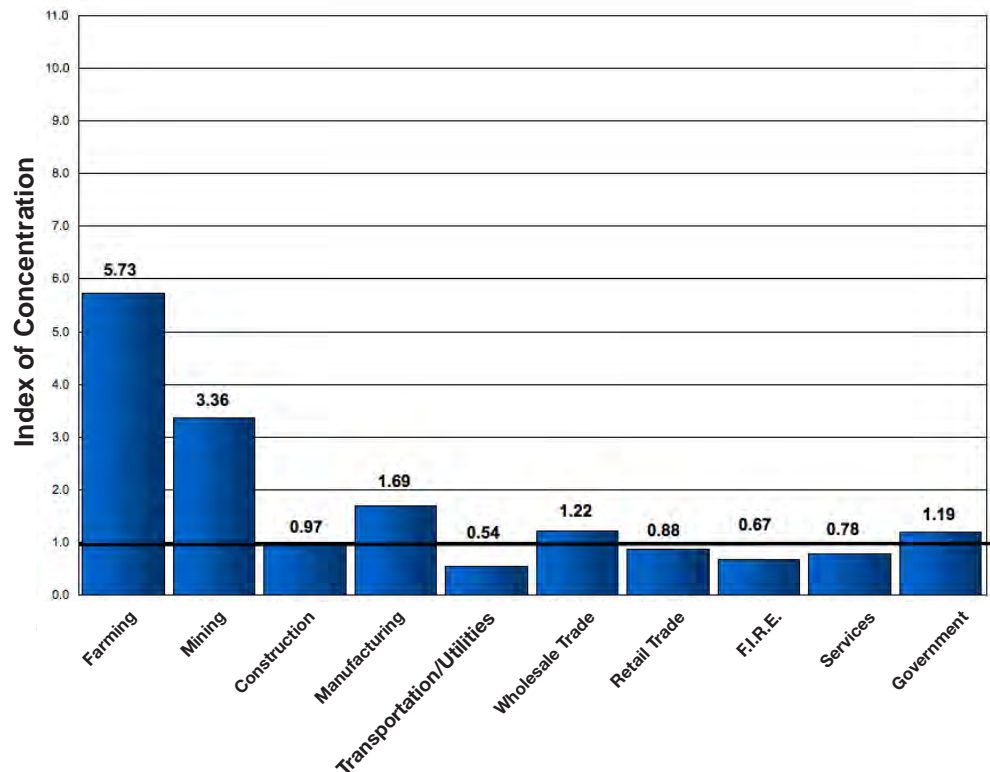
Figure 27I Estimated Distribution of County Employment by Industry (Percent)

	Lee 1990	N IL 1990	Lee 2000	N IL 2000	Lee 2007	N IL 2007
Farming	7.7%	0.6%	6.4%	0.5%	5.7%	0.4%
Ag Services/Forest & Fishing	1.2	0.6	1.1	0.8	1.1	0.8
Mining	0.5	0.2	0.3	0.1	0.3	0.1
Construction	3.3	4.7	4.7	4.9	5.0	5.1
Manufacturing	14.2	16.2	19.1	13.2	17.2	10.1
Transportation/ Utilities	6.9	5.5	3.2	5.8	2.8	5.2
Wholesale Trade	3.1	6.6	4.8	5.7	6.5	5.3
Retail Trade	13.0	15.5	12.5	14.7	13.0	14.8
F.I.R.E.	5.1	9.6	6.2	9.7	7.0	10.5
Services	29.2	28.7	27.2	33.8	28.6	36.8
Government	15.9	11.8	14.5	10.9	12.9	10.8
Total no. of jobs	17,791	4,863,719	18,270	5,626,109	19,049	5,840,376

Note: Columns may not add up to 100.0% due to rounding. In some cases, historical data have been re-estimated.

Source: Woods & Poole, 2007
Note: Employment measured by "place of work".

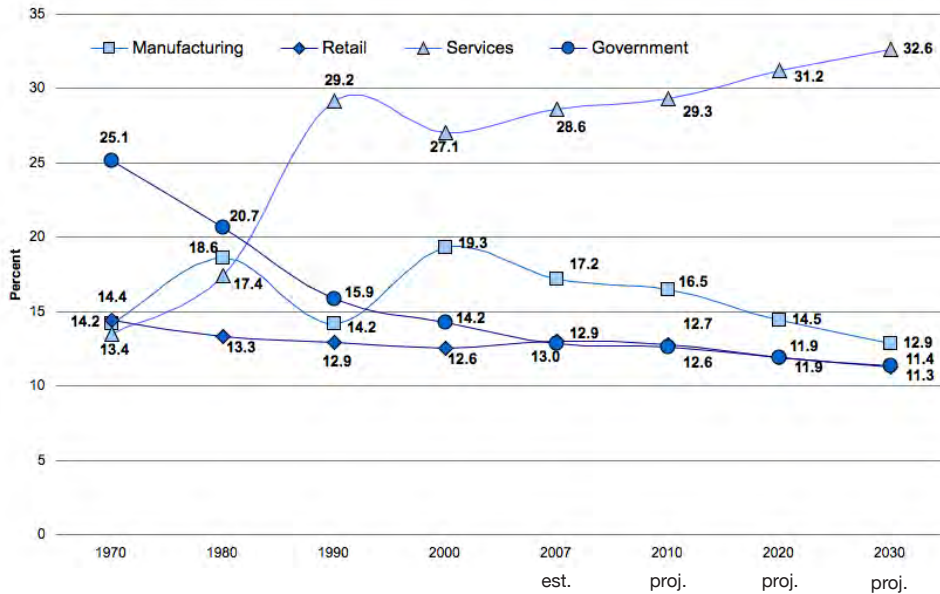
Figure 27J Concentration of County Employment by Industry Sectors, 2007



Note: Values greater than 1.0 indicate a local employment concentration greater than the same sector in the Northern Illinois region.

Sources: Woods & Poole 2007; Northern Illinois University

Figure 27K Historic Distribution of Employment by Industry Sectors (Percent)



Source: Woods & Poole, 2007

Figure 27L Local Economic Vitality

	County Highest Sales Manufacturing	Growth Industry	Total Business
		<i>Services</i>	
Business Startup Rate - 2006	4.35%	2.40%	2.25%
Business Startup Index - '05-07	0.51	0.3	0.21
Business Failure Rate - 2006	17.86%	15.78%	15.69%
Business Retention Index - '05-07	1.14	1.52	1.5
Sales Growth Index	0.1	7.15	0.13

Source: Bizminer.com, 2007

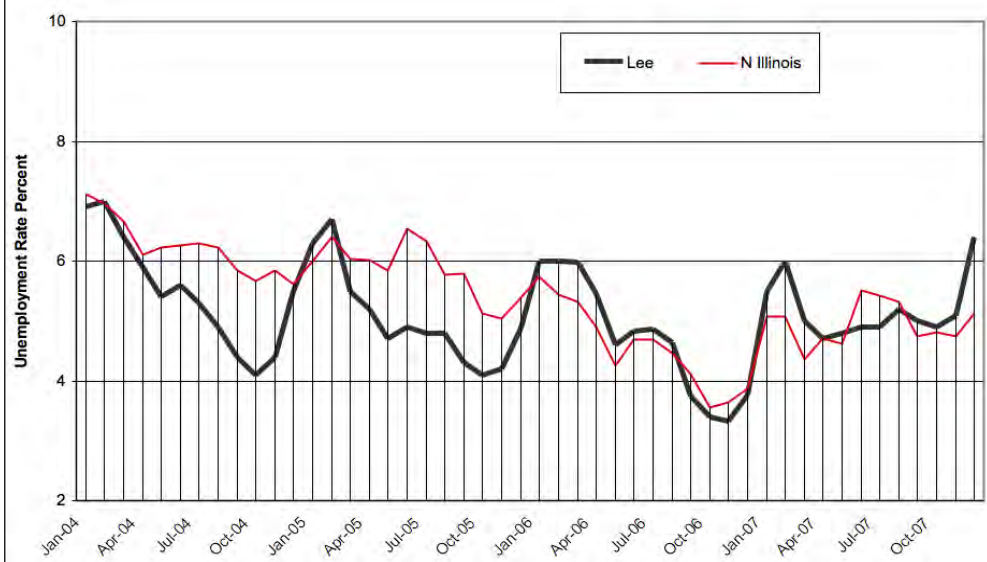
All indices are measured against U.S. Index of 1; higher local indices show more vitality. Startup Activity Rate measures the percentage of firms which began operations over the last year compared to the number of firms doing business in the area for which ages can be identified. The Startup Index is an indicator of an area's ability to generate economic dynamism from new sources. Business Failure Rate measures the number of businesses remaining in operation three years after the initial measurement date and count of local businesses. Areas with high vitality performance - many entrepreneurs, business in-migration, and new branch attraction often have low retention rates; while low growth areas have higher retention rates.

LEE COUNTY

State Annual Average

- 1998 - 4.5
- 1999 - 4.3
- 2000 - 4.3
- 2001 - 5.4
- 2002 - 6.5
- 2003 - 6.6
- 2004 - 6.1
- 2005 - 5.7
- 2006 - 4.5
- 2007 - 5.0

Figure 27M Unemployment Rates by Month (Percent)



Source: Illinois Department of Employment Security

Figure 27N Employment and Establishments for 2nd Quarter 2007

	Establishments	Employed	Wages (000's)
Total	792	13,625	\$204,084
Private Sector (NAICS)	726	10,867	84,432
GOODS-PRODUCING	155	3,217	33,306
Natural Resources and Mining	11	87	719
Construction	96	407	3,682
Manufacturing	48	2,723	28,906
SERVICE-PROVIDING	571	7,650	51,126
Trade, Transportation, and Utilities	179	2,904	19,298
Wholesale Trade (42)	45	1,200	9,459
Retail Trade (44,45)	95	1,324	6,750
Transportation & Warehousing (48,49)	35	313	2,295
Utilities (22)	4	67	794
Information	12	118	1,132
Financial Activities	62	315	2,272
Finance & Insurance (52)	37	233	1,763
Real Estate & Rental & Leasing (53)	25	82	509
Professional and Business Services	74	712	5,100
Professional, Scientific & Technical Services (54)	*	*	*
Management of Companies & Enterprises (55)	*	*	*
Administrative & Support & Waste Mngmt. (56)	31	424	1,753
Educational and Health Services	84	2,304	19,252
Educational Services (61)	7	80	355
Health Care & Social Assistance (62)	77	2,224	18,896
Leisure and Hospitality	86	871	2,213
Arts, Entertainment & Recreation (71)	7	199	592
Accommodation & Food Services (72)	79	672	1,621
Other Services	70	423	1,831
Unclassified	4	3	29
State & Local Government	49	2,672	25,716
State Government	3	1,145	14,016
Local Government	46	1,527	11,700
Federal Government	17	86	934

Source: 'Illinois At Work', Illinois Department of Employment Security

Includes all employment covered by IL Unemployment Insurance Act

*Data not available due to suppression for privacy

Figure 27O Comparison of Equalized Assessed Valuations by Class of Property, 2004, 2005, 2006 (Thousands of Dollars)*

	Assessment Years			% Change 05-06	2006 Average Tax Rate*
	2004	2005	2006		
Residential	\$288,833	\$308,741	\$325,369	5.4%	\$7.80
Farm	\$125,953	\$121,987	\$117,466	-3.7%	\$7.73
Commercial	\$58,759	\$61,303	\$69,373	13.2%	\$8.27
Industrial	\$40,365	\$44,020	\$47,234	7.3%	\$7.79

Source: County Clerks' Offices PTAX 250

*Average tax rate per \$100 of equalized assessed valuation.

Figure 27P Residential Housing Information

	1990	2000	2007
Housing Units	13,314	14,310	15,653
% Vacant Units	6.3%	7.4%	6.4%
Median Housing Value	\$46,600	\$83,400	\$134,654
Median Sale Price of			
Single Family Homes	\$39,600	\$75,200	\$94,500
Occupied Rental Units	3,793	3,462	3,588
Median Rent	\$228	\$374	\$570

Sources: 1990, 2000 Census of Population and Housing;
Easy Analytic Software, 2007; Illinois Association of Realtors, 2007
Note: Price is 3rd quarter median sale price.

Figure 27Q Residential Migration Patterns

	1990	2000
Persons 5 yrs and older	32,024	34,101
Residing in same house as 5 yrs ago	59.9%	60.1%
Lived in a different house in the U.S.	39.9%	39.2%
Same State	35.5%	35.1%
Residing in different house, same county	22.0%	19.8%
Residing in a different county	13.4%	15.3%
Different State	4.4%	4.1%
Lived Abroad	0.2%	0.7%
% Foreign Born of Total Population	1.0%	1.9%

Source: 1990, 2000 Census

LEE COUNTY

Foreign Owned
Agricultural Land

1992 - 16 parcels
4,690 acres

1996 - 15 parcels
3,791 acres

2002 - 14 parcels
3,822 acres

Number of Farms in
Lee County

1982 - 1,230
1987 - 1,148
1992 - 1,006
1997 - 904
2002 - 842

Average Illinois
Price Per Bushel

2005 est. for 2004
Corn \$2.08
Soybeans \$5.76

2006 est. for 2005
Corn \$3.35
Soybeans \$6.40

2008 est. for 2007
Corn \$4.05
Soybeans \$11.00

Figure 27R Land in Farms, 1997 and 2002

	1997	% of Total Land	2002	% of Total Land
Lee Co. (acres)	404,028	86.3	389,037	83.1
Northern Illinois (acres)	5,832,569		5,616,194	

Source: U.S. Department of Agriculture, 2002 Census of Agriculture

Figure 27S Harvested Cropland, Total Market Value of Crops Sold, 1997 and 2002

	1997	% of Region Total	2002	% of Region Total
Lee Co. Harvested Cropland (acres)	363,916	7.4	362,655	7.5
Northern Illinois Harvested Cropland (acres)	4,936,291		4,851,468	
Lee Co. Market Value of Products Sold (\$1,000)	142,056	6.1	129,461	6.2
Northern Illinois Market Value of Products Sold (\$1,000)	2,311,234		2,089,310	

Source: U.S. Census Bureau, 2002 Census of Agriculture
Note: Region now includes 22 Northern Illinois counties.

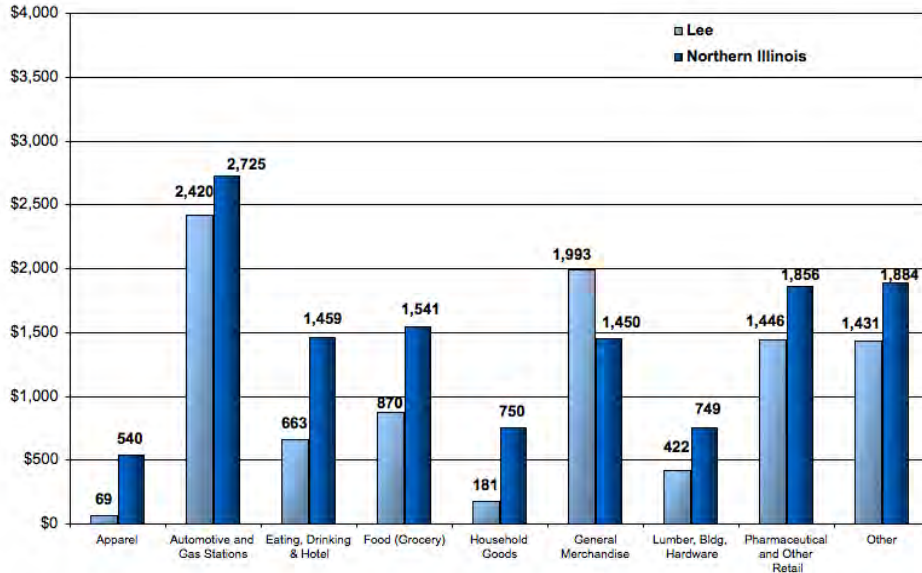
Figure 27T Major Crop Production

	2005	2006	2007
Corn			
Production (bushels)	36,437,200	46,379,600	51,051,000
Yield (bushels/acre)	142	188	182
% of Northern Total	9.3%	9.9%	8.8%
Soybeans			
Production (bushels)	5,137,100	6,174,500	3,868,800
Yield (bushels/acre)	47	53	48
% of Northern Total	6.9%	6.8%	6.1%

Source: Illinois Department of Agriculture, 2008

LEE COUNTY

Figure 27U Per Capita Retail Sales by Retail Stores in County, 2007 (Dollars)



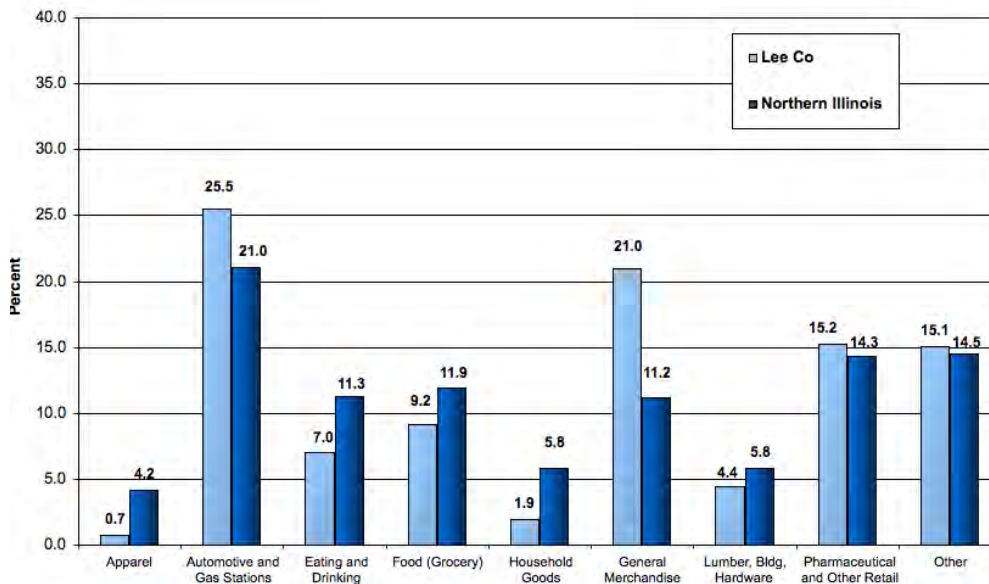
Sources: Illinois Department of Internal Revenue, 2008; 2007 Census Estimates (2008)

Per Capita Retail Sales Totals

Lee County
\$9,495

N Illinois Region
\$12,956

Figure 27V Distribution of Sales by Retail Stores in County, 2007 (Percent)



Source: Illinois Department of Revenue, 2008.

**LEE
COUNTY**

Note: In some cases, historical data have been re-estimated.

Figure 27W Per Capita Income, 1990, 2000, and 2007 (estimated), Current Dollars

	1990	2000	2007 (est.)	Annualized % Change 2000-2007
Lee Co.	\$15,977	\$ 23,134	\$ 30,352	4.0%
Northern Illinois	\$19,226	\$ 29,237	\$ 35,856	3.0%
Illinois	\$20,824	\$ 32,185	\$ 39,807	3.1%
		County	State	U.S.
2007 Wealth Index		83.42	107.37	100.00

Source: Woods & Poole, 2007

Figure 27X Household Income

	1990	2000	2007
Households w/Money Income	12,478	13,258	14,649
Less than \$25,000	42.8%	27.1%	21.8%
\$25,000-50,000	40.4%	34.3%	30.4%
\$50,001-100,000	15.0%	31.8%	35.7%
More than \$100,000	1.8%	6.8%	12.1%
Median Household Income	\$28,284	\$40,967	\$48,159

Sources: U.S. Census Bureau; Easy Analytic Software, Inc., 2007

**LEE
COUNTY**

Figure 27Y County Amenities

Leisure and Recreation

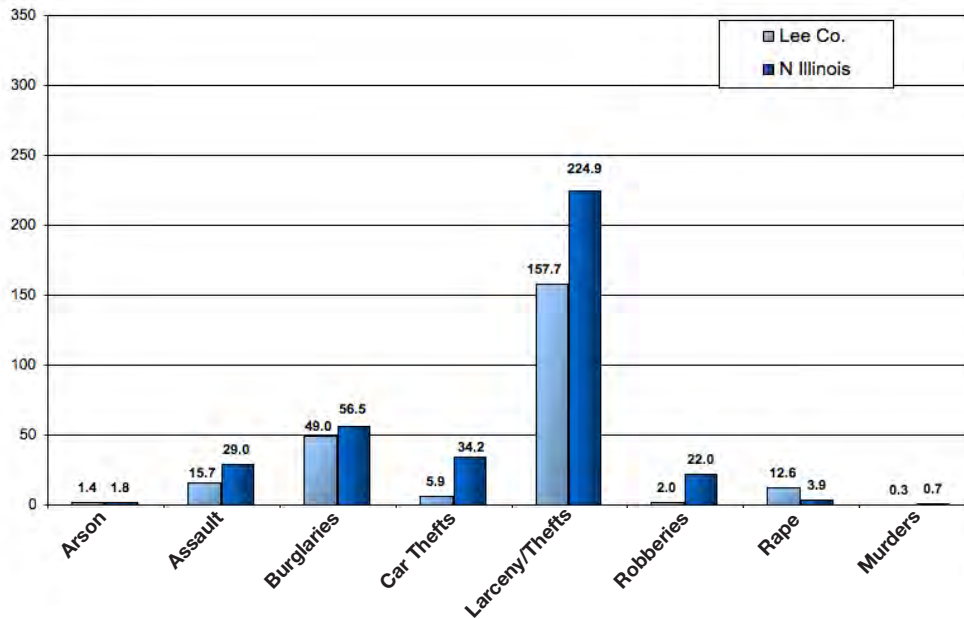
Museums	8
Forest Preserves/Conservation/Natural Areas	4
Golf Courses	1
State Parks	6

Agritourism

Wineries	NA
Farmer's Markets	2
Seasonal Farm Attractions	NA

Note: All counts are estimates. Data changes as new facilities come on line.

Figure 27Z Criminal Offenses Reported in Lee County, 2006
(Per 10,000 Persons)



Sources: Illinois State Police, 2006; US Census 2005 Population Estimate

Total Reported Index
Crimes for 2006:
873

Total Reported Index
Crimes for 2005:
939

Total Reported Index
Crimes for 2004:
954

Total Reported Index
Crimes for 2003:
1,001

**LEE
COUNTY**

Figure 27AA State Revenue Collections and Expenditures in Lee County

Revenues Collected (millions of dollars)	
State Sales and Use Taxes (2007)	\$18.5
Individual Income Taxes (est. FY 2001)	17.9
State Motor Fuel Tax (est. FY 2001)	5.8
Local Property Tax (2006)	44.8
State Expenditures (millions of dollars)	
Education (1999-2000)	\$15.3
Public Aid (FY 2006)	1.1
State Payroll (2007)	41.6
Number of State Employees (2007)	789

Sources: Illinois Legislative Research Unit, Illinois County Data Book, 2002; State of Illinois Office of the Comptroller, 2007; County Clerk's Office - PTAX 250

Average Daily Miles
Travelled 2007
1,596,743

Change 2006-2007
-2.8%

Figure 27AB Proposed New State Expenditures for Highway Improvements in FY2008*

Lee County	Total	Per Mile
State Roads	\$ 2,558,000	\$ 12,983
Local Roads	\$ 867,500	\$ 666
Total Improvements	\$ 3,415,000	\$ 2,301
N IL Total Improvements	\$ 892,761,000	\$ 19,335

Source: Illinois Department of Transportation, Proposed Improvements for Illinois Highways FY 2008

*This is in addition to ongoing projects from previously funded improvement programs. These funds do not include local funds used for highway improvements.

Figure 27AC Banking Resources in the County 2007*

	Lee County	N Illinois	Illinois
Commercial Banks	13	556	646
Offices	18	2,932	4,430
Deposits	\$521,000	\$255,899,000	\$306,649,000
Savings Institutions	2	104	100
Offices	3	413	520
Deposits	\$93,000	\$18,611,000	\$32,113,000
Offices per 10,000 Population	5.9	3.5	3.2
Total Deposits/County Population	\$17,198	\$28,655	\$26,780
Share of N/Illinois Deposits	0.2%	81.0%	-----
Deposit to Earnings Ratio	\$1,197	\$1,164	\$1,087
Deposit to Income Ratio	\$75	\$90	\$86

Source: FDIC Data Website 2008; US Census Population Estimates 2006

*Data are for federally chartered banks only, dollars are in thousands.

Figure 27AD IRS Tax Returns Filed* by Migrating Lee County Residents 2003-2006

Three Year Total (2003-2006)	Migrating Into County	Migrating Out of County	Net Change
Total Movement	2,466	2,593	-127
Domestic Migration	2,466	2,593	-127
Same State	1,994	1,886	108
Different State	472	707	-235
Foreign Migration	0	0	0
Three Year Average (2003-2006)	Migrating Into County	Migrating Out of County	Net Change
Estimated Median Reported Income	\$35,220	\$31,828	\$3,393
Aggregate Reported Income (\$000)	\$28,964	\$27,505	\$1,458

Source: U.S. Internal Revenue Service, County Migration Flows 2007

*This count is roughly equivalent to the number of households moving in and out of the county.

Figure 27AE Trade Area Analysis of Retail Sales, 2006

Merchandise Group	Potential Purchases by County Residents	Sales Reported by County Merchants	Surplus or Leakage	Ratio of County Per Capita Sales to State Per Capita Sales
General Merch.	\$481,313	\$610,745	\$129,432	111.3%
Food	\$455,592	\$317,611	-\$137,981	61.2%
Eating/Drinking	\$411,677	\$228,338	-\$183,339	48.7%
Apparel	\$138,327	\$14,176	-\$124,151	9.0%
Home Furnishings	\$218,644	\$58,642	-\$160,003	23.5%
Building Merch.	\$249,267	\$147,625	-\$101,642	52.0%
Auto./Fill. Stations	\$866,704	\$858,442	-\$8,262	86.9%
Drugs/Other Retail	\$531,572	\$319,620	-\$211,952	52.7%
Agriculture	\$494,385	\$405,468	-\$88,917	71.9%
Manufacturing	\$103,133	\$60,432	-\$42,700	51.4%
Total Sales	\$3,950,615	\$3,021,099	-\$929,515	67.0%

Sources: Illinois Department of Revenue, 2005, Kind of Business Report; U.S. Census Bureau County Business Patterns.

Note: Potential Sales is derived from the county population times the state average per capita spending in each category times the ratio of county per capita income to state per capita income.