

Northern Illinois Market Facts

2 0 0 8

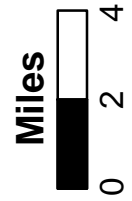
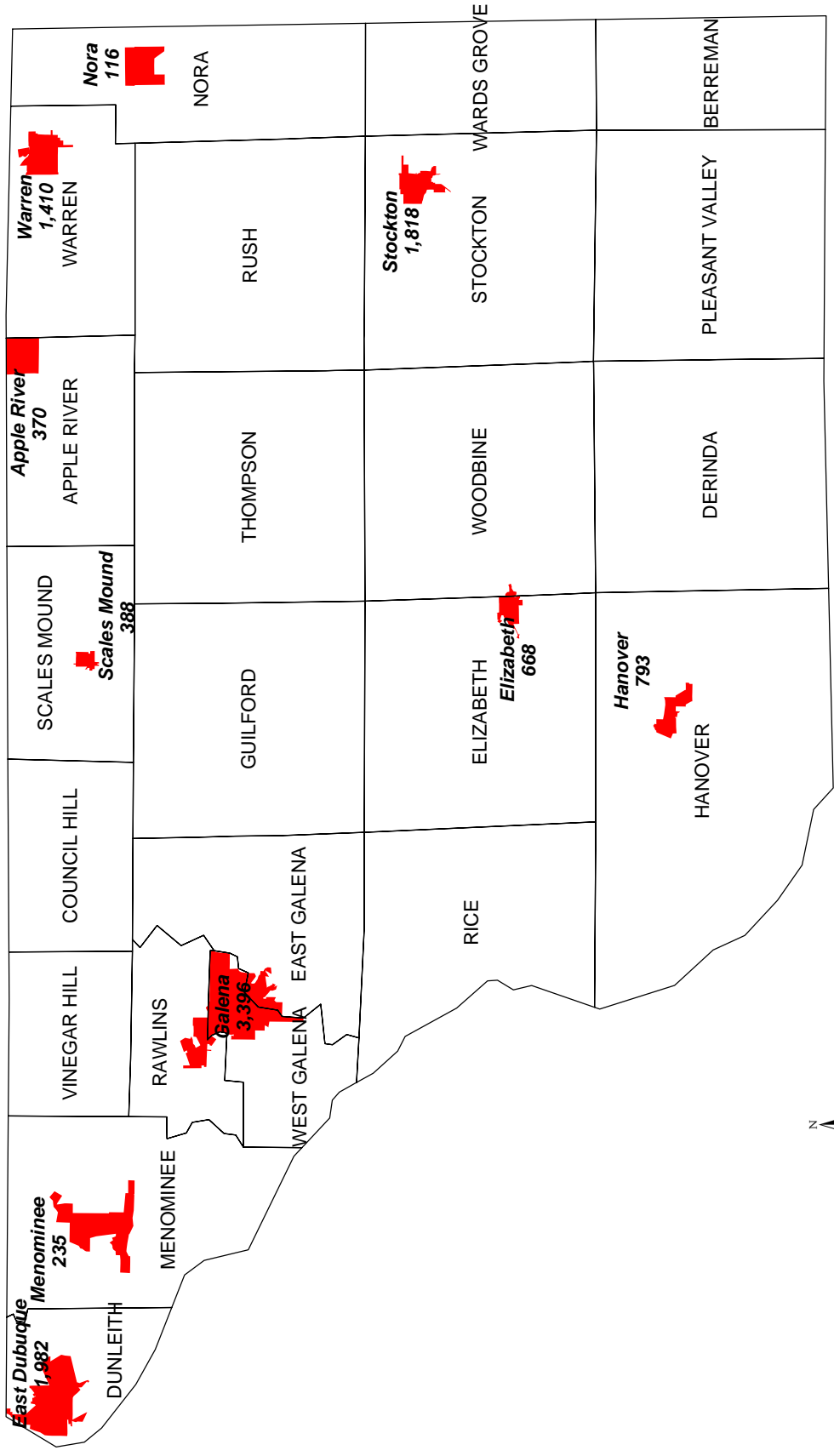
The screenshot shows a web browser window with the URL <http://www.jodavieess.org/>. The page features a red header with a white star and the text "Welcome to Jo Daviess County, Illinois". A blue sidebar on the left contains a navigation menu with items like "Home", "County Board", "County Departments", "Upcoming Meetings", "Minutes", "Applications & Forms", "Helpful Links", "Visitor Information", "Economic Development & Planning", "Court Records", "Job Postings", "County Facts", and "Website Policy". The main content area includes a "Welcome to Jo Daviess County" message, a weather widget for Galena, IL showing 52°F, and various links to local information and services.



jodavieess

JoDavies County

Places and Townships



Note: Figures in each place are 2006 Census population estimates.
 Map prepared by the Center for Governmental Studies, NIU-Outreach.

JO DAVIESS COUNTY

Population Density 2007
37.7 persons
per square mile

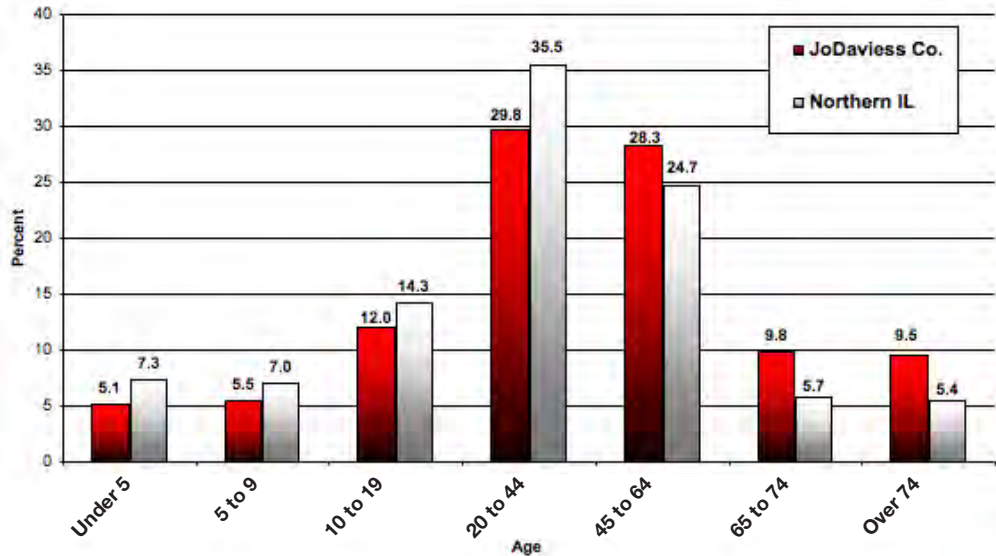
Median Age of
County Population
43.26

Figure 22A Population Trends and Projections

	Total 1990	Total 2000	Total 2007 (est.)	Total 2020 (proj.)
Jo Daviess Co. Population	21,821	22,289	22,661	23,039
Percent of Northern Illinois	0.3%	0.2%	0.2%	0.2%

Sources: U.S. Census Bureau; Woods & Poole 2007
Note: 1990, and 2000 are actual census counts. Census 2007 estimate = 22,594.
2007 is a Woods & Poole estimate; 2020 is a Woods & Poole projection.

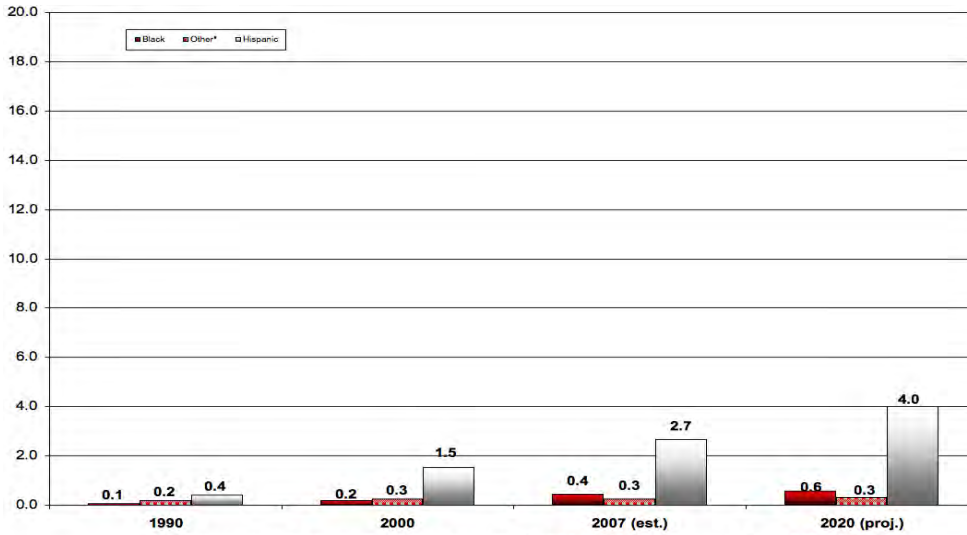
Figure 22B Age Distribution in 2007 by Percent of Population



Source: Woods & Poole, 2007
Note: Numbers may not add up to 100% due to computer rounding.

**JO DAVIESS
COUNTY**

Figure 22C County Minority Population by Percent



Sources: 1990, 2000 Census; Woods & Poole, 2007
*Other is Asian/Pacific Islander and American Indian.

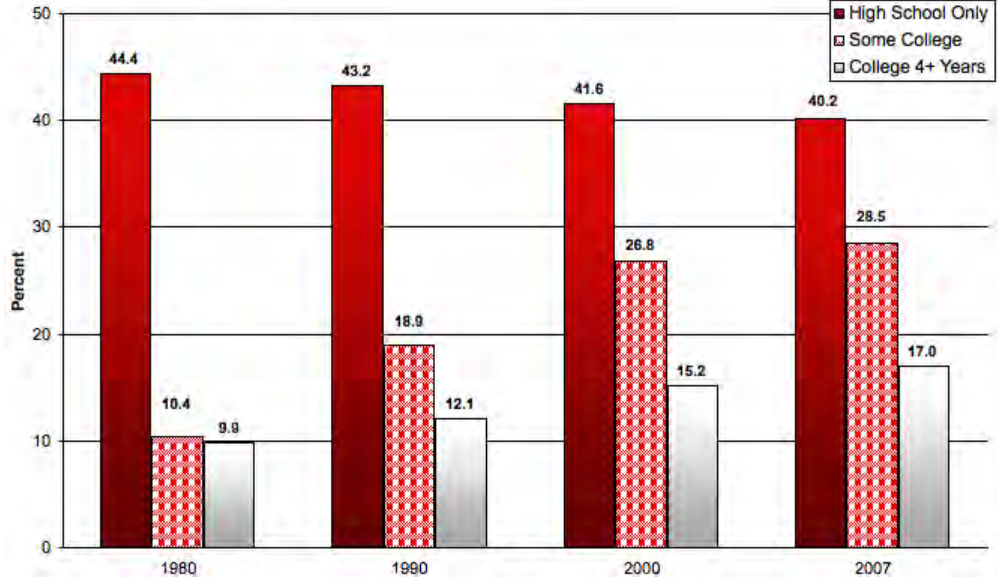
Figure 22D Household Trends and Projections

	1990	2000	2007 (est.)	2020 (proj.)
Number of Households	8,371	9,218	9,671	10,252
Percent of Northern Illinois	0.3%	0.3%	0.3%	0.3%
Jo Daviess Co.: Persons per Household	2.59	2.40	2.32	2.22
Northern Illinois: Persons per Household	2.67	2.62	2.57	2.50

Sources: 1990, 2000 Census; Woods & Poole, 2007

**JO DAVIESS
COUNTY**

Figure 22E Highest Educational Attainment: Percent of Persons Age 25 and Over



Sources: U.S. Census Bureau; Easy Analytic Software, Inc., 2007
See Figure 3 in the Regional Section for comparisons.

Figure 22F General School Enrollment Information for Jo Daviess County

K-12 Districts	6
Elementary Districts	NA
High School Districts	NA
Special Education and Other Cooperative Districts	NA
Public School Student Enrollment 2007-2008	3,366
Largest District Enrollment	830
Smallest District Enrollment	239
<hr/>	
Number of Non-Public Schools*	2
Non-Public School Enrollment 2006-2007	485
<hr/>	
Total 2006 Equalized Assessed Valuation Per Student	\$196,198
Estimated Average Property Tax Rate per \$100 in Assessment Year '056	\$6.20

Sources: IL State Board of Education Fall Housing Reports 2007-08; 2006 PTAX-250; CGS
Note: Data reflect all types of districts and have differing grade levels included.
Special Education/Other Cooperatives are not included in the range of largest to smallest.
*These data reflect only those schools reporting data 2006-2007.

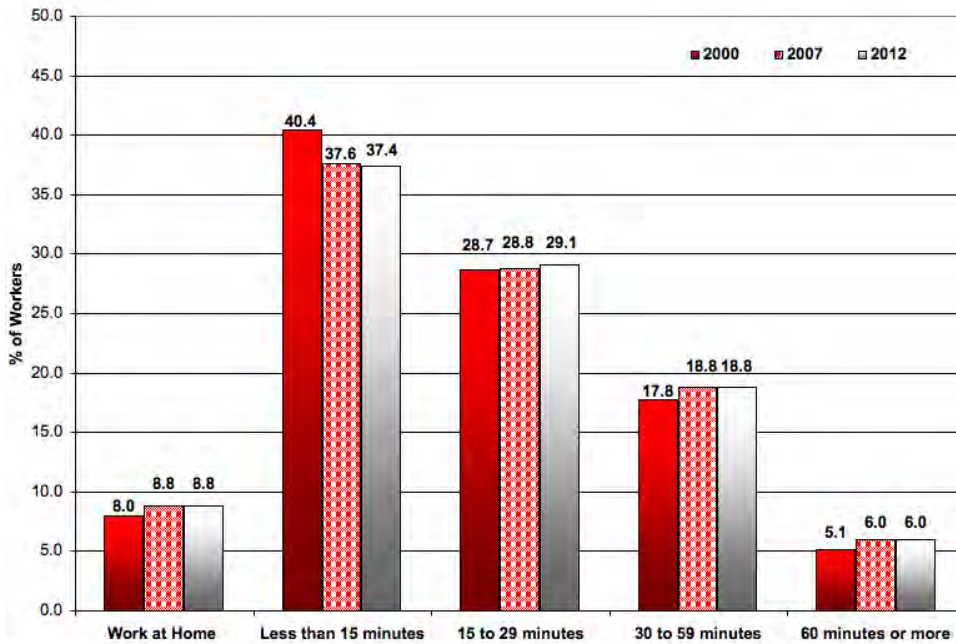
**JO DAVIESS
COUNTY**

Figure 22G Labor Force Participation Characteristics

	1990	2000	2007
Total in Civilian Labor Force	11,205	12,008	12,143
% of persons 16 and over	66.9	67.5	67.3
% of persons 65 and over	16.3	17.9	10.6
% of women in labor force	58.4	61.4	61.8
% of labor force that is female	44.9	46.1	46.2
% self-employed	13.9	13.1	12.0
% white collar	37.8	51.0	49.0

Source: U.S. Census Bureau, 2000; Easy Analytic Software, Inc., 2007;
Longitudinal Employer - Household Dynamics, 2007
Note: For residents 16 years old and over by place of residence.

Figure 22H Travel Time to Work, 2000, 2007, 2012



Source: Easy Analytic Software, Inc., 2007

**JO DAVIESS
COUNTY**

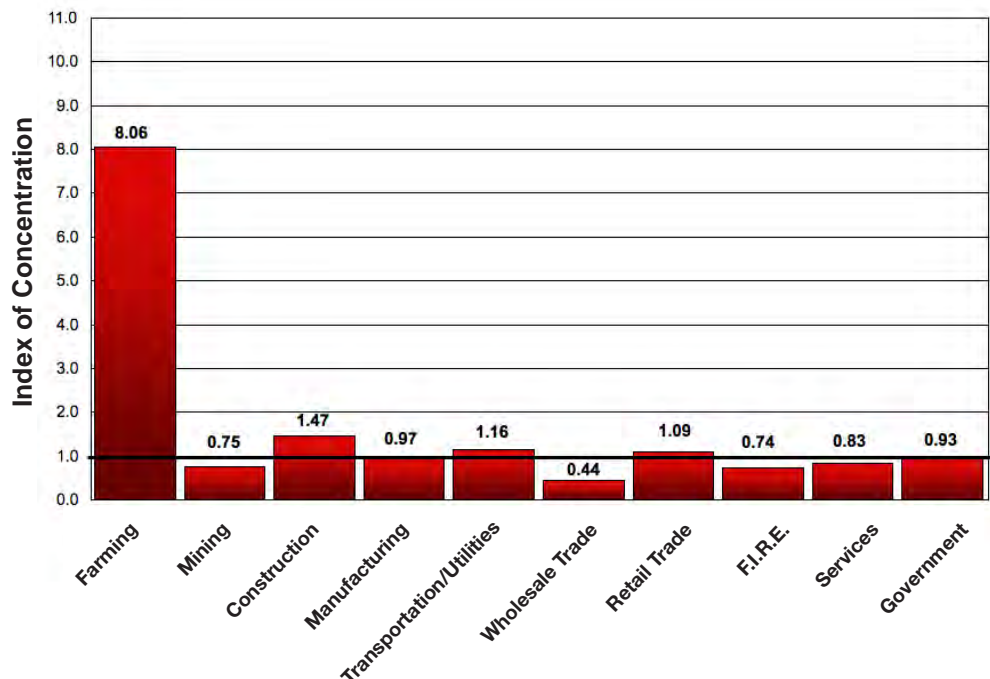
Figure 22I Estimated Distribution of County Employment by Industry (Percent)

	Jo Daviess 1990	N IL 1990	Jo Daviess 2000	N IL 2000	Jo Daviess 2007	N IL 2007
Farming	12.3%	0.6%	9.1%	0.5%	7.9%	0.4%
Ag Services/Forest & Fishing	1.5	0.6	2.2	0.8	1.7	0.8
Mining	0.1	0.2	0.1	0.1	0.1	0.1
Construction	5.9	4.7	6.5	4.9	7.5	5.1
Manufacturing	17.6	16.2	15.2	13.2	9.9	10.1
Transportation/ Utilities	3.6	5.5	5.9	5.8	6.1	5.2
Wholesale Trade	3.3	6.6	2.7	5.7	2.3	5.3
Retail Trade	14.9	15.5	16.4	14.7	16.2	14.8
F.I.R.E.	9.8	9.6	6.7	9.7	7.7	10.5
Services	20.4	28.7	25.6	33.8	30.6	36.8
Government	10.7	11.8	9.6	10.9	10.0	10.8
Total no. of jobs	11,459	4,863,719	13,531	5,626,109	14,192	5,840,376

Note: Columns may not add up to 100.0% due to rounding. In some cases, historical data have been re-estimated.

Source: Woods & Poole, 2007
Note: Employment measured by "place of work".

Figure 22J Concentration of County Employment by Industry Sectors, 2007

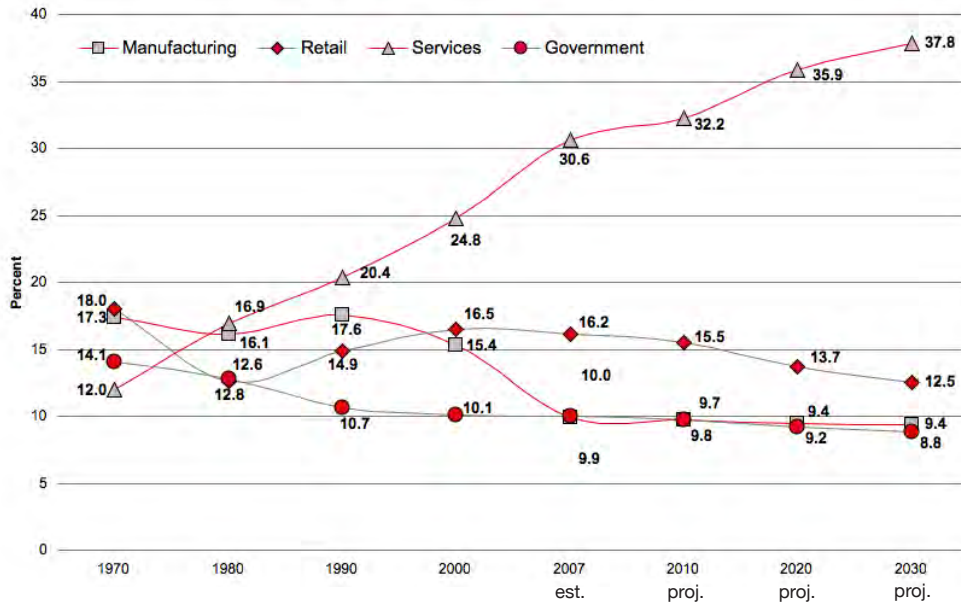


Note: Values greater than 1.0 indicate a local employment concentration greater than the same sector in the Northern Illinois region.

Sources: Woods & Poole 2007; Northern Illinois University

**JO DAVIESS
COUNTY**

Figure 22K Historic Distribution of Employment by Industry Sectors (Percent)



Source: Woods & Poole, 2007

Figure 22L Local Economic Vitality

	County Highest Sales Manufacturing	Growth Industry Wholesale Trade	Total Business
Business Startup Rate - 2006	6.12%	3.57%	4.89%
Business Startup Index - '05-07	0.71	0.48	0.47
Business Failure Rate - 2006	1.82%	20.93%	16.04%
Business Retention Index - '05-07	11.24	1.03	1.47
Sales Growth Index	0.73	3.91	0.66

Source: Bizminer.com, 2007

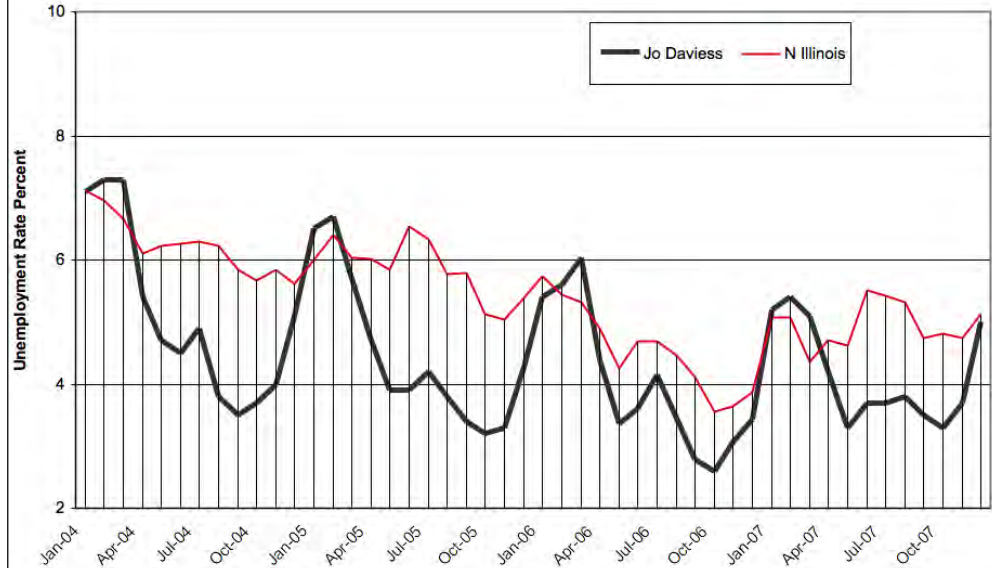
All indices are measured against U.S. Index of 1; higher local indices show more vitality. Startup Activity Rate measures the percentage of firms which began operations over the last year compared to the number of firms doing business in the area for which ages can be identified. The Startup Index is an indicator of an area's ability to generate economic dynamism from new sources. Business Failure Rate measures the number of businesses remaining in operation three years after the initial measurement date and count of local businesses. Areas with high vitality performance - many entrepreneurs, business in-migration, and new branch attraction often have low retention rates; while low growth areas have higher retention rates.

JO DAVIESS COUNTY

State Annual Average

- 1998 - 4.5
- 1999 - 4.3
- 2000 - 4.3
- 2001 - 5.4
- 2002 - 6.5
- 2003 - 6.6
- 2004 - 6.1
- 2005 - 5.7
- 2006 - 4.5
- 2007 - 5.0

Figure 22M Unemployment Rates by Month (Percent)



Source: Illinois Department of Employment Security

Figure 22N Employment and Establishments for 2nd Quarter 2007

	Establishments	Employed	Wages (000's)
Private Sector (NAICS)	742	7,718	48,152
GOODS-PRODUCING	173	2,145	19,090
Natural Resources and Mining	13	57	458
Construction	120	600	5,115
Manufacturing	40	1,488	13,516
SERVICE-PROVIDING	569	5,573	29,062
Trade, Transportation, and Utilities	210	1,624	9,527
Wholesale Trade (42)	*	*	*
Retail Trade (44,45)	122	1,054	4,645
Transportation & Warehousing (48,49)	46	325	2,603
Utilities (22)	*	*	*
Information	8	44	302
Financial Activities	61	353	2,924
Finance & Insurance (52)	38	308	2,630
Real Estate & Rental & Leasing (53)	23	45	294
Professional and Business Services	79	714	6,544
Professional, Scientific & Technical Services (54)	*	*	*
Management of Companies & Enterprises (55)	*	*	*
Administrative & Support & Waste Mngmt. (56)	25	357	2,957
Educational and Health Services	30	414	2,133
Educational Services (61)	3	33	113
Health Care & Social Assistance (62)	27	381	2,020
Leisure and Hospitality	113	2,007	5,564
Arts, Entertainment & Recreation (71)	14	233	539
Accommodation & Food Services (72)	99	1,774	5,025
Other Services	67	415	2,060
Unclassified	1	2	7
State & Local Government	43	1,188	8,601
State Government	0	0	0
Local Government	43	1,188	8,601
Federal Government	13	77	895

Source: 'Illinois At Work', Illinois Department of Employment Security
 Includes all employment covered by IL Unemployment Insurance Act
 *Data not available due to suppression for privacy

Figure 22O Comparison of Equalized Assessed Valuations by Class of Property, 2004, 2005, 2006 (Thousands of Dollars)*

	Assessment Years			% Change 05-06	2006 Average Tax Rate*
	2004	2005	2006		
Residential	\$322,739	\$348,785	\$387,435	11.1%	\$5.93
Farm	\$155,479	\$164,792	\$183,288	11.2%	\$6.12
Commercial	\$67,288	\$69,899	\$73,591	5.3%	\$6.80
Industrial	\$12,349	\$12,403	\$12,634	1.9%	\$6.71

Source: County Clerks' Offices PTAX 250
*Average tax rate per \$100 of equalized assessed valuation.

Figure 22P Residential Housing Information

	1990	2000	2007
Housing Units	10,757	12,003	12,434
% Vacant Units	22.2%	23.2%	23.3%
Median Housing Value	\$48,700	\$89,100	\$170,193
Median Sale Price of			
Single Family Homes	N/A	\$78,200	\$160,500
Occupied Rental Units	2,097	2,089	2,010
Median Rent	\$212	\$307	\$530

Sources: 1990, 2000 Census of Population and Housing;
Easy Analytic Software, 2007; Illinois Association of Realtors, 2007
Note: Price is 3rd quarter median sale price.

Figure 22Q Residential Migration Patterns

	1990	2000
Persons 5 yrs and older	20,435	21,047
Residing in same house as 5 yrs ago	66.5%	63.1%
Lived in a different house in the U.S.	33.4%	36.2%
Same State	26.1%	27.7%
Residing in different house, same county	18.6%	18.4%
Residing in a different county	7.4%	9.4%
Different State	7.3%	8.4%
Lived Abroad	0.1%	0.7%
% Foreign Born of Total Population	0.7%	1.7%

Source: 1990, 2000 Census

**JO DAVIESS
COUNTY**

Foreign Owned
Agricultural Land

1992 - 3 parcels
767 acres

1996 - 2 parcels
548 acres

2002 - 2 parcels
487 acres

Number of Farms in
Jo Daviess County

1982 - 1,142
1987 - 1,070
1992 - 955
1997 - 941
2002 - 989

Average Illinois
Price Per Bushel

2005 est. for 2004
Corn \$2.08
Soybeans \$5.76

2006 est. for 2005
Corn \$3.35
Soybeans \$6.40

2008 est. for 2007
Corn \$4.05
Soybeans \$11.00

Figure 22R Land in Farms, 1997 and 2002

	1997	% of Total Land	2002	% of Total Land
Jo Daviess Co.(acres)	293,906	73.8	264,493	66.4
Northern Illinois (acres)	5,832,569		5,616,194	

Source: U.S. Department of Agriculture, 2002 Census of Agriculture

Figure 22S Harvested Cropland, Total Market Value of Crops Sold, 1997 and 2002

	1997	% of Region Total	2002	% of Region Total
JoDaviess Co. Harvested Cropland (acres)	151,342	3.1	146,918	3.0
Northern Illinois Harvested Cropland (acres)	4,936,291		4,851,468	
Jo Daviess Co. Market Value of Products Sold (\$1,000)	72,002	3.2	70,163	3.4
Northern Illinois Market Value of Products Sold (\$1,000)	2,311,234		2,089,310	

Source: U.S. Census Bureau, 2002 Census of Agriculture
Note: Region now includes 22 Northern Illinois counties.

Figure 22T Major Crop Production

	2005	2006	2007
Corn			
Production (bushels)	12,919,500	12,848,400	17,930,400
Yield (bushels/acre)	165	166	186
% of Northern Total	3.3%	2.7%	3.1%
Soybeans			
Production (bushels)	2,162,400	2,365,200	1,554,800
Yield (bushels/acre)	53	54	52
% of Northern Total	2.9%	2.6%	2.4%

Source: Illinois Department of Agriculture, 2008

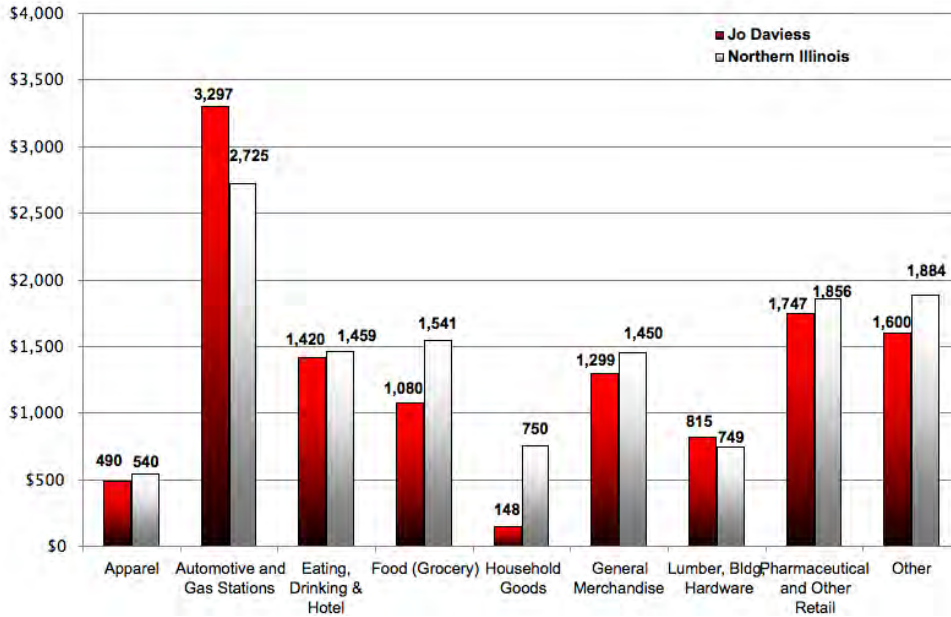
JO DAVIESS COUNTY

Per Capita Retail Sales Totals

Jo Daviess County
\$11,896

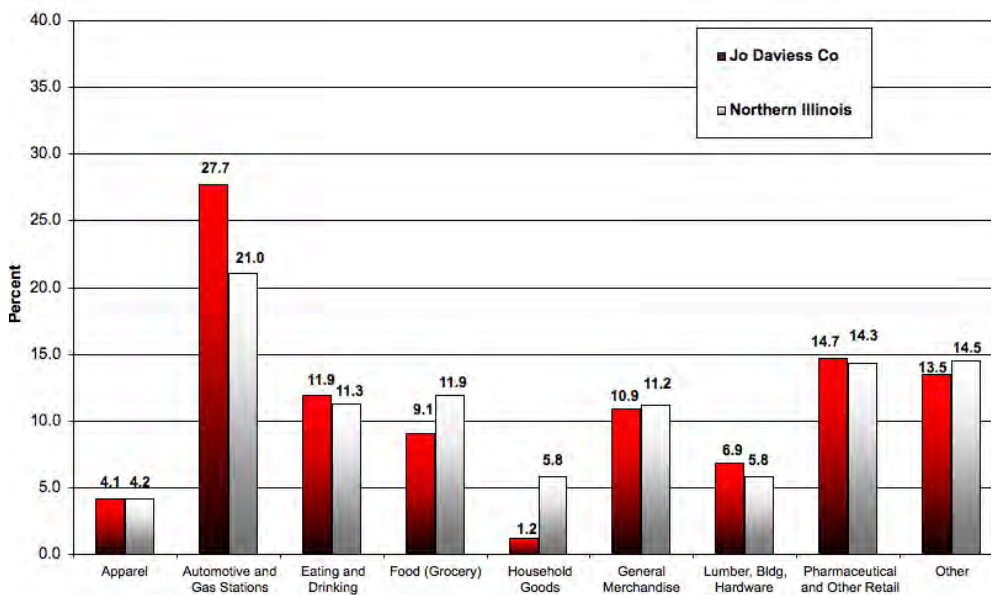
N Illinois Region
\$12,956

Figure 22U Per Capita Retail Sales by Retail Stores in County, 2007 (Dollars)



Source: Illinois Department of Revenue, 2008; 2007 Census Estimates (2008)

Figure 22V Distribution of Sales by Retail Stores in County, 2007 (Percent)



Source: Illinois Department of Revenue, 2008

**JO DAVIESS
COUNTY**

Note: In some cases, historical data have been re-estimated.

Figure 22W Per Capita Income, 1990, 2000, and 2007 (estimated), Current Dollars

	1990	2000	2007 (est.)	Annualized % Change 2000-2007
Jo Daviess Co.	\$17,053	\$ 28,086	\$ 39,253	4.9%
Northern Illinois	\$19,226	\$ 29,237	\$ 35,856	3.0%
Illinois	\$20,824	\$ 32,185	\$ 39,807	3.1%
		County	State	U.S.
2007 Wealth Index		111.21	107.37	100.00

Source: Woods & Poole, 2007

Figure 22X Household Income

	1990	2000	2007
Households w/Money Income	8,399	9,200	9,531
Less than \$25,000	46.7%	28.1%	22.5%
\$25,000-50,000	37.1%	34.6%	30.7%
\$50,001-100,000	14.3%	30.0%	34.6%
More than \$100,000	2.0%	7.3%	12.3%
Median Household Income	\$26,882	\$40,411	\$47,384

Sources: U.S. Census Bureau; Easy Analytic Software, Inc., 2007

**JO DAVIESS
COUNTY**

Figure 22Y County Amenities

Leisure and Recreation

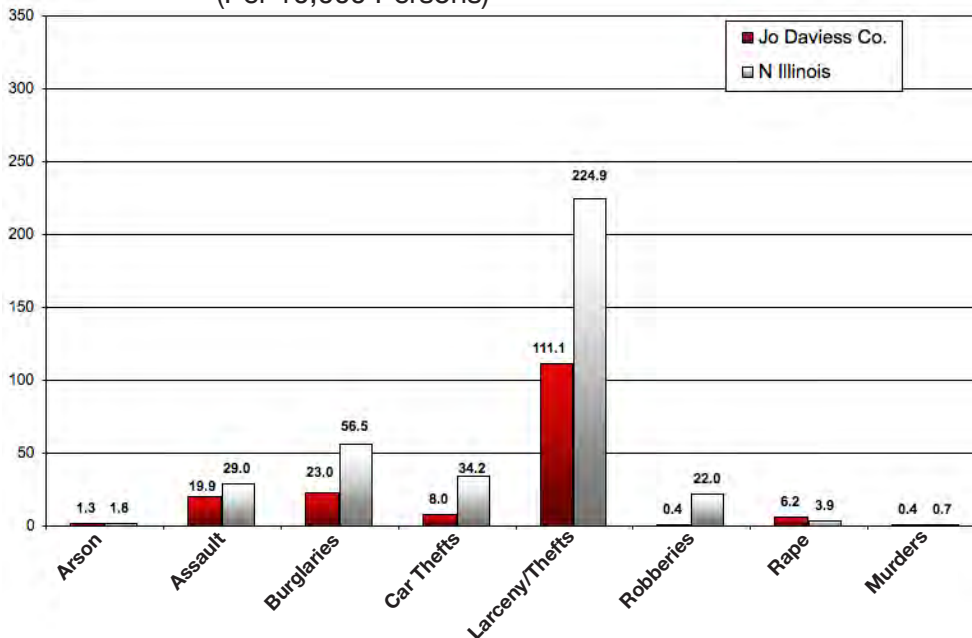
Museums	14
Forest Preserves/Conservation/Natural Areas	2
Golf Courses	11
State Parks	1

Agritourism

Wineries	3
Farmer's Markets	6
Seasonal Farm Attractions	NA

Note: All counts are estimates. Data changes as new facilities come on line.

Figure 22Z Criminal Offenses Reported in Jo Daviess County, 2007
(Per 10,000 Persons)



Sources: Illinois State Police, 2007; US Census 2006 Population Estimate

Total Reported Index Crimes for 2006: 385

Total Reported Index Crimes for 2005: 335

Total Reported Index Crimes for 2004: 329

Total Reported Index Crimes for 2003: 361

**JO DAVIESS
COUNTY**

Figure 22AA State Revenue Collections and Expenditures in Jo Daviess Co.

Revenues Collected (millions of dollars)	
State Sales and Use Taxes (2005)	\$15.1
Individual Income Taxes (est. FY 2001)	14.0
State Motor Fuel Tax (est. FY 2001)	4.1
Local Property Tax (2005)	40.3
State Expenditures (millions of dollars)	
Education (1999-2000)	\$8.3
Public Aid (FY 2006)	4.9
State Payroll (2006)	3.8
Number of State Employees (2007)	106

Sources: Illinois Legislative Research Unit, Illinois County Data Book, 2002; State of Illinois Office of the Comptroller, 2007; County Clerk's Office - PTAX 250

Average Daily Miles
Travelled 2007
661,921

Change 2006-2007
6.2%

Figure 22AB Proposed New State Expenditures for Highway Improvements in FY2008*

Jo Daviess County	Total	Per Mile
State Roads	\$ 1,355,000	\$ 14,666
Local Roads	\$ 1,475,000	\$ 1,471
Total Improvements	\$ 2,830,000	\$ 2,585
N IL Total Improvements	\$ 892,761,000	\$ 19,335

Source: Illinois Department of Transportation, Proposed Improvements for Illinois Highways FY 2008.
*This is in addition to ongoing projects from previously funded improvement programs.
These funds do not include local funds used for highway improvements.

Figure 22AC Banking Resources in the County, 2007*

	Jo Daviess Co.	N Illinois	Illinois
Commercial Banks	8	556	629
Offices	17	2,932	4,430
Deposits	\$637,000	\$255,899,000	\$306,649,000
Savings Institutions	1	104	100
Offices	1	413	520
Deposits	\$32,000	\$18,611,000	\$32,113,000
Offices per 10,000 Population	8.0	3.5	3.2
Total Deposits/County Population	\$29,610	\$28,655	\$26,780
Share of N/Illinois Deposits	0.2%	81.0%	
Deposit to Earnings Ratio	\$2,196	\$1,164	\$1,087
Deposit to Income Ratio	\$109	\$90	\$86

Sources: FDIC Data Website 2008; US Census Population Estimates 2006
*Data are for federally chartered banks only, dollars are in thousands.

**JO DAVIESS
COUNTY**

Figure 22AD IRS Tax Returns Filed* by Migrating Jo Daviess County Residents 2003-2006

Three Year Total (2003-2006)	Migrating Into County	Migrating Out of County	Net Change
Total Movement	1,480	1,537	-57
Domestic Migration	1,480	1,537	-57
Same State	706	530	176
Different State	774	1,007	-233
Foreign Migration	0	0	0

Three Year Average (2003-2006)	Migrating Into County	Migrating Out of County	Net Change
Estimated Median Reported Income	\$56,533	\$35,403	\$21,131
Aggregate Reported Income (\$000)	\$27,958	\$18,157	\$9,801

Source: U.S. Internal Revenue Service, County Migration Flows 2007

*This count is roughly equivalent to the number of households moving in and out of the county.

Figure 22AE Trade Area Analysis of Retail Sales, 2006

Merchandise Group	Potential Purchases by County Residents	Sales Reported by County Merchants	Surplus or Leakage	Ratio of County Per Capita Sales to State Per Capita Sales
General Merch.	\$335,121	\$264,843	-\$70,279	76.3%
Food	\$317,213	\$226,106	-\$91,107	68.8%
Eating/Drinking	\$286,636	310,168	\$23,532	104.4%
Apparel	\$96,312	\$107,551	\$11,239	107.8%
Home Furnishings	\$152,234	\$34,040	-\$118,195	21.6%
Building Merch.	\$173,556	\$202,158	\$28,602	112.4%
Auto./Fill. Stations	\$603,455	\$711,220	\$107,765	113.8%
Drugs/Other Retail	\$370,115	\$362,122	-\$7,993	94.4%
Agriculture	\$344,222	\$298,808	-\$45,415	83.8%
Manufacturing	\$71,808	\$60,054	-\$11,754	80.7%
Total Sales	\$2,750,673	\$2,577,069	-\$173,604	90.4%

Sources: Illinois Department of Revenue, 2005, Kind of Business Report; U.S. Census Bureau County Business Patterns.

Note: Potential Sales is derived from the county population times the state average per capita spending in each category times the ratio of county per capita income to state per capita income.